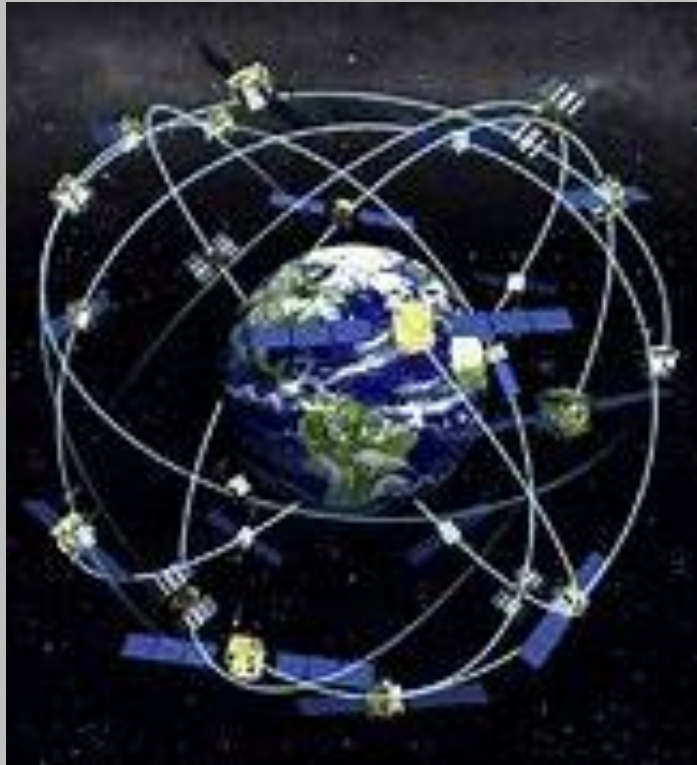


Erasmus – Allterra, Geotools

Diana Mizerová
Lucia Marčanová
Marek Buliak
Ján Dudák
Adam Šutek
Richard Hruška

GPS systems



1973-founding of GPS

Zoom on title of a book

Utilization: -developed firstly for military
-later open for civilian

Systems of GPS:

China -Beidou (system GPS)

Europe - Galileo

America - GPS

Russian - Glonas

Beidou, Gps, Glonas, Galileo = GNSS



- Accuracy on the cadastre:
 - land = deviation 5-10 cm
 - forest = deviation 0.5 meters
 - building = deviation 1 cm is too much
- Presentation of the device GNSS RTK rover STONEX S9 III

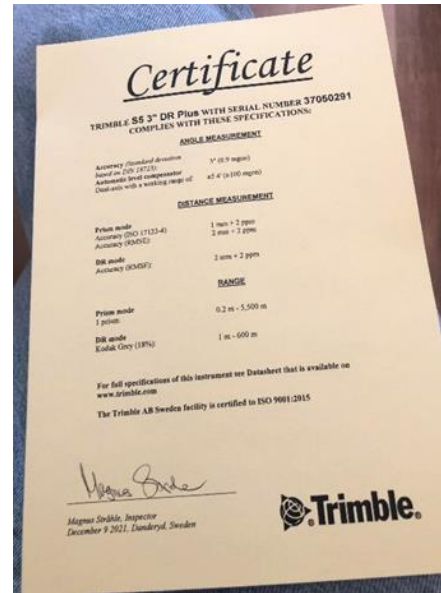




Seafloor - hydroskope

- Presentation of the American company Seafloor
- Deals with measuring the seafloor
- **Use of hydrodrones:**
 - measurement of the water bottom
 - measurement of sediments on the bottom
- It can recognize a ship in the vicinity and on the basis of this redirect the path
- To the depth it goes at a speed of 1500 meters per second





Robotic total station

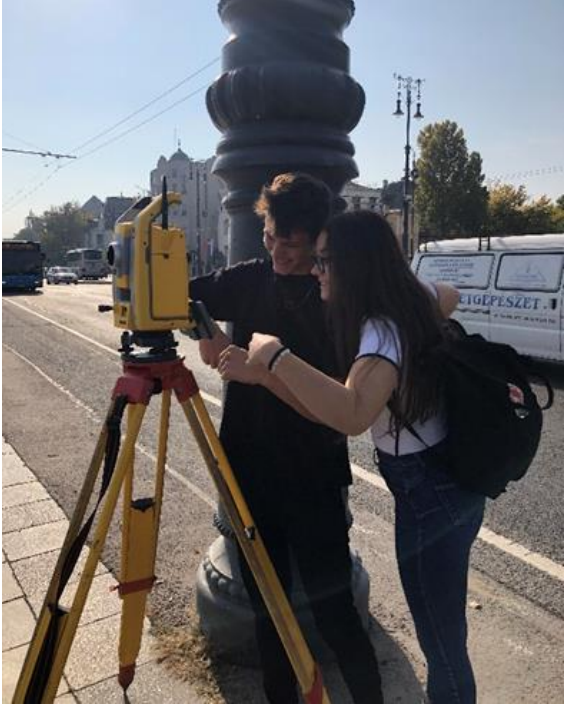
- It is used to measure horizontal and vertical angles and distances
- **Robotic** – bluetooth connection to the controller
- **Difference between teodolite and total station:**
Teodolite: measures only the angle
Total station: measures angle and distance
- Prism pole is required for use
- Every geodetic instrument must have a certificate (calibration)



Measuring in exterior

- Measuring with GPS receiver and with Total station on Millennium square of heros
- **Measurement procedure:**
 - focusing on 4 main points (A, B, C, D)
- - measuring points around the entire perimeter of the square (140 points)



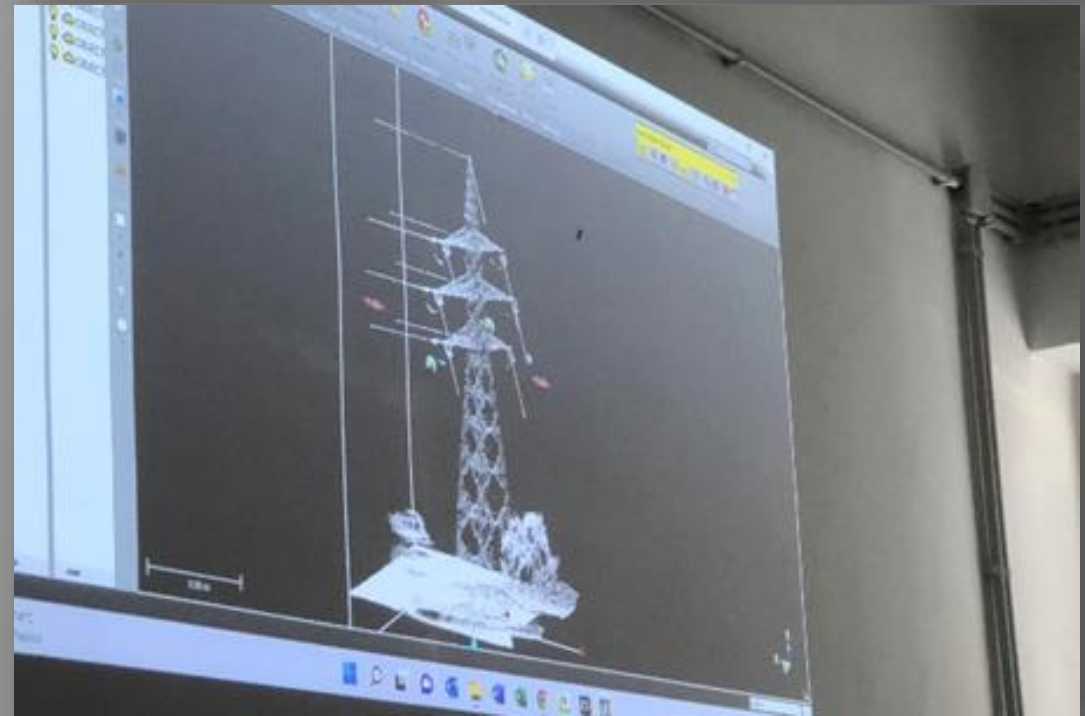
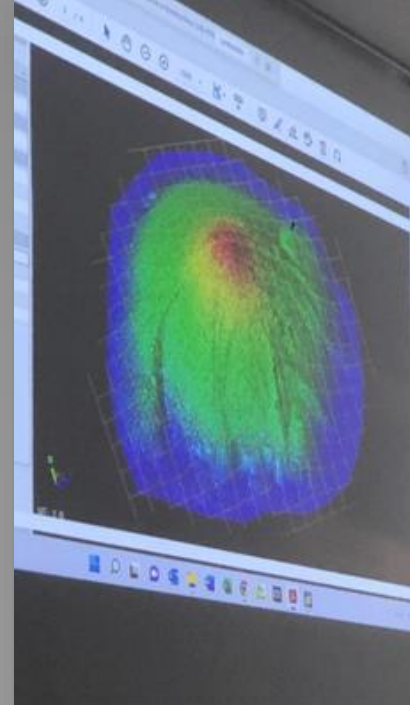


- Entering values from measurements with a GPS receiver into the Total station (Y, X, altitude)



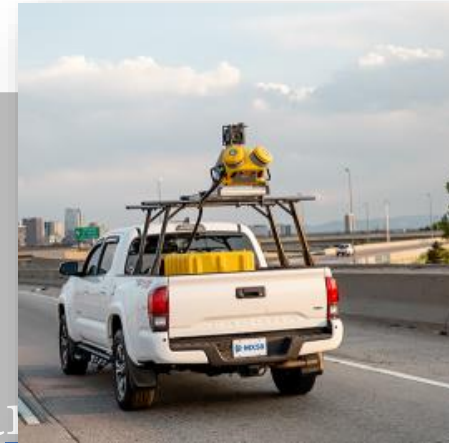
Scanner

- It is able to measure 600 000 points per second, from which a model is subsequently created
- Sample of scanners:
 - Trimble X7
 - Trimble MX50
 - Stonex XH120 SLAM
- -indoor and outdoor use
- -panoramic photo function
- -the option of selecting a specific object
- -the possibility of measuring even at night (without panoramic photo)



Trimble MX50:

- mobile mapping system
- use: road mapping
- when measuring ,the device is placed on the roof of the car



Trimble X7:

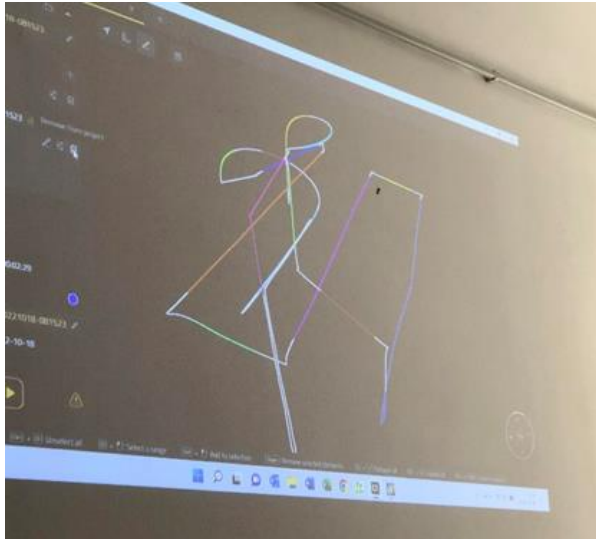
- determination of pile volume (when quarrying stone)
- measurement time = 3 minutes
- measurement of high voltage line



Stonex XH120 SLAM:

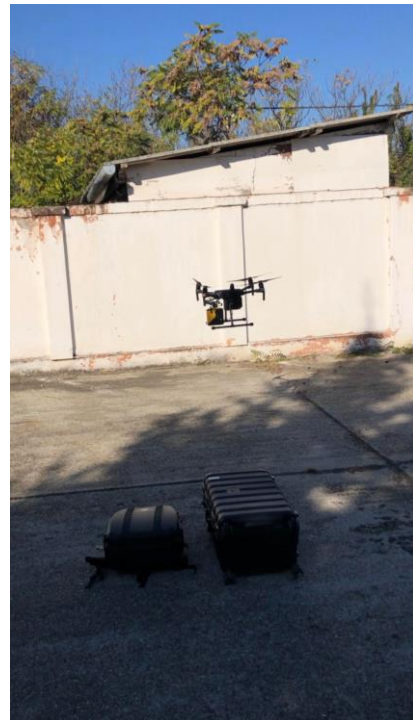
- the possibility of measuring up to 120 meters
- scanning of apartments





Drones

- **Use:** geodetic targeting, mapping, military applications
- **Creating a new project:**
 - selecting the measured area
 - setting the flying height: 40 meters
 - setting other necessary values



- **Trinity F90+:**

- max. duration : 90 minutes
- optimal speed: 17 meters per second
- accuracy 1,29 cm
- 240 000 points per second



- **YellowCann Mapper:**

- speed 10 meters per second
- max. duration 90 minutes
- accuracy 3 cm





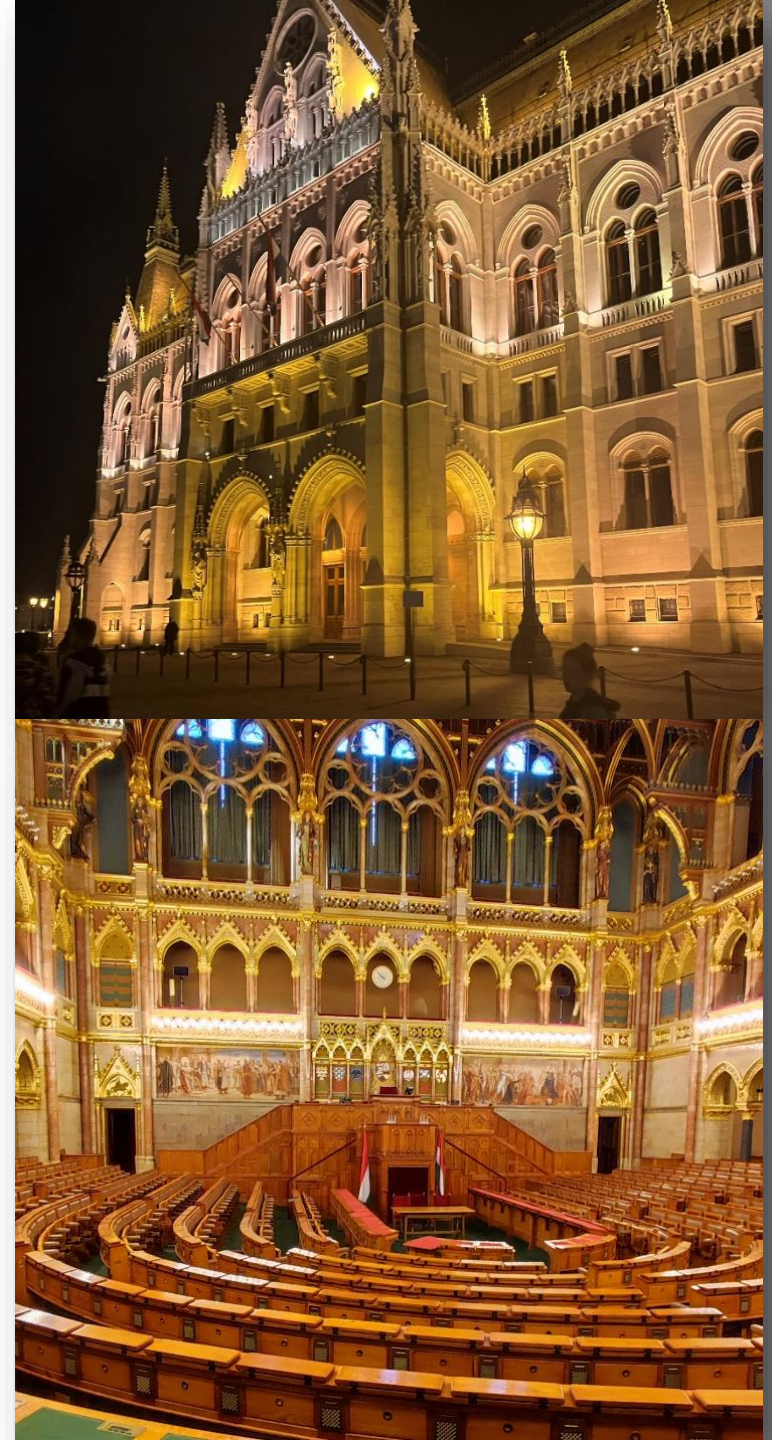
Óbudai - Sziget

- **Devices:**
 - Gps receiver
 - Total station
 - Scanner
- **Measurement:**
 - we mark the points that we will aim with the GPS receiver
 - using the measured values, the total station determines its current position (free station)
 - targeting the same points with the robotic total station
- Placement of 6 targets and their focus (there must be no obstacles in the way). These points will be used during scanning as point clouds (moving the scanner).



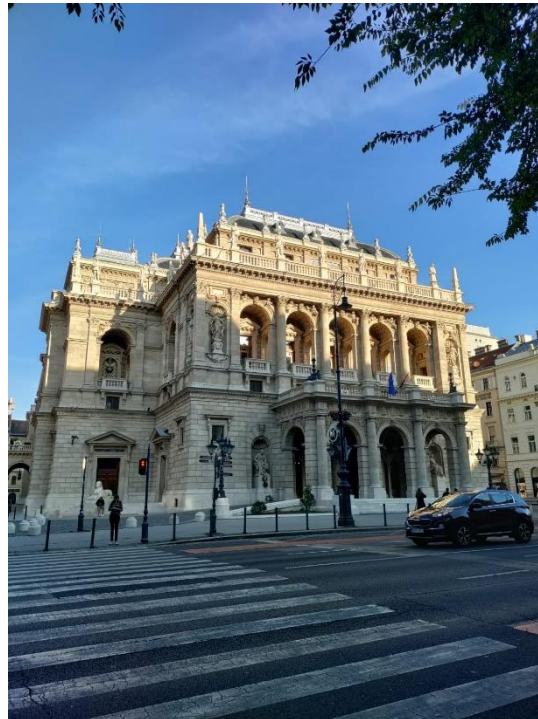
Országház

- Országház is building of Hungarian Parliament.
- It is one of the national symbols of Hungary Crown Jewels





Hungarian State Opera House, Budapest



- The building of the Hungarian State Opera specializes in operas and ballet.
- Opened to the public in 1884



ZOO Budapest

- The Budapest Zoological and Botanical Garden is the oldest zoological park in Hungary and one of the oldest in the world



Hospital in the rock

- It used to be a hospital and nuclear bunker
- Located in the caves of Buda Castle
- Now a museum





Matthias Church

- Roman Catholic temple located on the square of the Holy Trinity

Liberty Statue Budapest

- **Monument** on Gellért Hill
- The memory of those who sacrificed their lives for the independence, freedom and prosperity of Hungary





Singing fountain

- Located on Margaret Island
- One of the biggest fountain in Europe
- Water show accompanied by well-known classical songs



Photos from work





Group photos



Thank you for your
attention